

μ

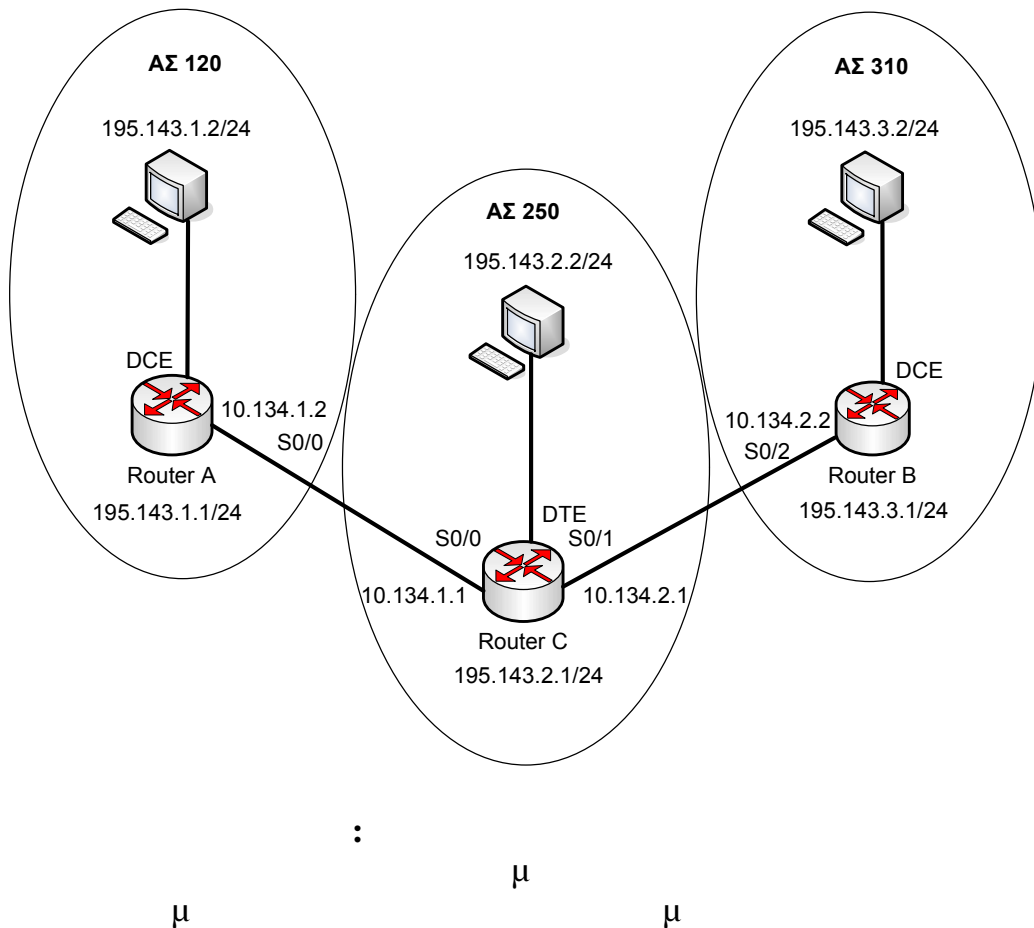
3

μ :
 μ
 μ access lists.
 μ access lists
 μ CISCO μ access
 lists.

- μ :

1. μ .
 K μ μ .
 console. μ Command Line
 Interface μ , μ μ Hyper
 Terminal. μ μ interfaces μ
 μ μ μ 64000
 . μ ping μ
2. μ 195.143.1.2
 μ 195.143.2.2
 FTP, μ
 HTTP, μ 195.143.3.2
 Email (SMTP, POP3).
3. BGP μ .
4. μ RouterC :
 4.1. access lists μ
 195.143.3.0
 HTTP Server
 4.2. 195.143.1.0 μ
 HTTP Server
 4.3. 195.143.3.0 μ ping
 195.143.2.0

- 4.4. 195.143.1.0 μ μ ping
195.143.2.0
5. access lists μ Router :
- 5.1. 195.143.3.0 μ telnet FTP Server
- 5.2. 195.143.2.0 μ μ telnet FTP Server
- 5.3. 195.143.3.0 FTP Server) FTP
- 5.4. 195.143.2.0 μ FTP Server) FTP
6. access lists μ Router :
- 6.1. traceroute 195.143.2.0
- 6.2. traceroute 195.143.1.0
- 6.3. 195.143.1.0 μ Email (Email Server)
- 6.4. 195.143.2.0 Email Server) Email



Command Line Interface

μ .