

μ

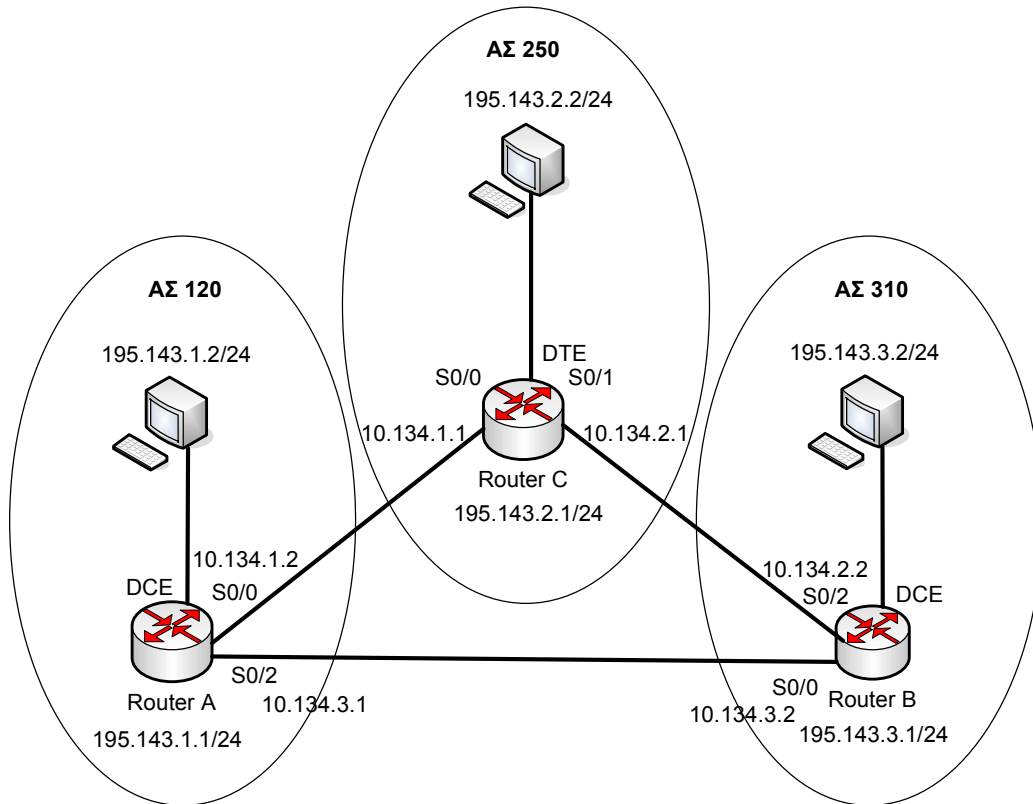
4

μ :
 μ
 μ OSPF μ .
 , / « » (cost)
 interfaces μ , μ
 μ μ OSPF.

- μ :

1. μ .
 K μ μ μ .
 console. μ Command Line
 Interface μ , μ μ Hyper
 Terminal. μ μ interfaces μ
 μ μ μ 64000
 . μ ping μ
2. OSPF
 μ
- 2.1. OSPF
- 2.2. μ
- 2.3. μ OSPF
- 2.4.
3. μ μ « » (cost)
 OSPF
 3.1. μ interfaces cost 10.
 3.2. traceroute (μ) tracet
 (μ)

- 3.2.1. μ (Router A) traceroute μ C
 (195.143.2.2)
- 3.2.2. μ B (Router B) traceroute μ A
 (195.143.1.2)
- 3.2.3. μ C (Router C) traceroute μ B
 (195.143.3.2)
- 3.3. μ μ



- 4. μ μ OSPF cost interfaces
- 4.1. μ OSPF cost (μ)
- 4.1.1. μ (Router A) μ 60 interface s0/0.
 traceroute μ C (195.143.2.2)
- 4.1.2. μ (Router) μ 60 interface s0/0.
 traceroute μ (195.143.1.2)
- 4.1.3. μ C (Router C) μ 60 interface s0/1.
 traceroute μ (195.143.3.2)
- 4.2. μ μ
- 5. μ μ OSPF cost interfaces
- 5.1. μ OSPF cost (μ) :

- 5.1.1. μ (Router A) μ 20 interface s0/0.
 traceroute μ C (195.143.2.2)
- 5.1.2. μ (Router) μ 80 interface s0/0.
 traceroute μ (195.143.1.2)
- 5.1.3. μ C (Router C) μ 40 interface s0/1.
 traceroute μ (195.143.3.2)
- 5.2. μ μ
- 6. μ μ

	(μ)
195.143.1.1 - 195.143.1.2	Line (128Kbps)
195.143.2.1 - 195.143.2.2	T3 (44 Mbps)
195.143.3.1 - 195.143.3.2	E1 (2.048 Mbps)
10.134.1.1 - 10.134.1.2	Gigabit Ethernet (1 Gbps)
10.134.2.1 - 10.134.2.2	Line (64Kbps)
10.134.3.1 - 10.134.3.2	Ethernet (10 Mbps)

- 6.1. μ interfaces μ OSPF cost
- μ :
- 6.1.1. default μ μ OSPF cost.
- traceroute μ
- 6.1.2. μ .
- μ μ μ μ
- μ OSPF cost. μ μ
- μ 10Gbps (10 Gigabit Ethernet).
- traceroute μ
- 6.1.3. μ .
- μ «1/ » μ
- OSPF cost. traceroute
- μ μ .
- 7. 10.134.2.1 - 10.134.2.2 10.134.3.1 -
- 10.134.3.2 10 Gigabit Ethernet (10Gbps)
- 7.1. μ interfaces default μ
- μ OSPF cost. traceroute
- μ μ .
- :
- μ μ
- μ μ

Command Line Interface

μ .